

A promotional image for a shapewear collection. It features four women of diverse ethnicities walking on a sandy beach under a clear blue sky. The woman in the foreground on the left is wearing a white two-piece shapewear set. The woman in the middle is wearing a light beige one-piece shapewear. The woman on the right is wearing a black one-piece shapewear. The woman in the background is also wearing a light beige one-piece shapewear. The text 'AW23 – SHAPEWEAR COLLECTION' is overlaid in the center in a white, sans-serif font. Below it, the text '– DORINA –' and 'PREVIEW' are also overlaid in the same font.

AW23 – SHAPEWEAR
COLLECTION

– DORINA –

PREVIEW

INVISIBLE SCULPT - Medium Control

RC

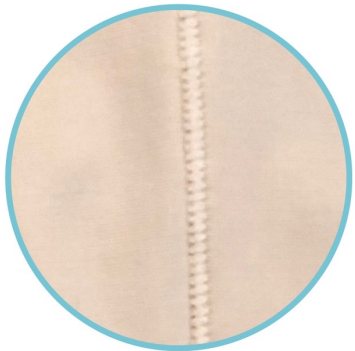


FXHF0001ME025-BK0001
SHAPING BRIEF
(SUPER HIGH WAIST)

RC



FXHF0001ME025-BE0001
SHAPING BRIEF
(SUPER HIGH WAIST)



Seams: Ladder stitch

RC



FXHS0002ME025-BK0001
SHAPING SHORT
(MID-WAIST)

RC



FXHS0002ME025-BE0001
SHAPING SHORT
(MID-WAIST)



Leg opening finishing:
Thin Elastics

A photograph of two women embracing in a desert landscape. The woman on the left has long dark hair and is wearing a dark, form-fitting top. The woman on the right has her eyes closed and is wearing a light-colored, shimmering, form-fitting top. They are standing in front of white sand dunes under a clear blue sky. The text is overlaid on the image.

SS24 – SHAPEWEAR
COLLECTION

– DORINA –

PREVIEW

SS24 - SHAPEWEAR

Invisible Sculpt

Cut-off: MAY 23

In House: NOV 23

INVISIBLE SCULPT - Light Control

RC



FXBR0032ME025-BK0001
NON PADDED TRIANGLE



FXBR0032ME025-BE0001
NON PADDED TRIANGLE

RC



FXHR0002ME025-BK0001
SUPER HIGH WAIST THONG



FXHR0002ME025-BE0001
SUPER HIGH WAIST THONG

R



FXCA0006ME025-BK0001
PADDED NON-WIRED SHAPING CAMISOLE
(Removable Pads)
(Multi-way straps)



FXCA0006ME025-BE0001
PADDED NON-WIRED SHAPING CAMISOLE
(Removable Pads)
(Multi-way straps)



Thin elastics L/O
finishing

SUBLIME SCULPT - Medium Control



Thin elastics waistband & L/O finishing



SS24 - SHAPEWEAR

Absolute Sculpt

Cut-off: MAY 23

In House: NOV 23

ABSOLUTE SCULPT - High Control



FXWL0008CK022-BK0001
LIGHT PADDED BRALETTE
(removable pads)



FXWL0008CK022-BE0001
LIGHT PADDED BRALETTE
(removable pads)



FXHF0002CK022-BK0001
MID-WAIST BRIEF



FXHF0002CK022-BE0001
MID-WAIST BRIEF



FXST0018CK022-BK0001
MID-WAIST THONG



FXST0018CK022-BE0001
MID-WAIST THONG



FXHS0003CK022-BK0001
HIGH-WAIST SHORTS
(OPEN CROTCH)



FXHS0003CK022-BE0001
HIGH-WAIST SHORTS
(OPEN CROTCH)



FXJP0002CK022-BK0001
OPEN BUST ROMPERS
(OPEN CROTCH)



FXJP0002CK022-BE0001
OPEN BUST ROMPERS
(OPEN CROTCH)



FXHB0003CK022-BK0001
NON-PADDED BODYSUIT



FXHB0003CK022-BE0001
NON-PADDED BODYSUIT



OPEN CROTCH



Leg opening finishing
(OVERLOCKED)



OPEN CROTCH

A photograph of two women in beige shapewear posing in a desert landscape. The woman on the left is a Black woman with her eyes closed, and the woman on the right is a white woman smiling. They are holding hands and raising their arms in a circular gesture. The background consists of sand dunes under a clear blue sky.

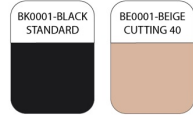
SS24 – SHAPEWEAR COLLECTION

– DORINA –

TECHNICAL SHEETS EXAMPLES

SS24 FX LINGERIE COLLECTION

Theme: SHAPEWEAR
 Program : Absolute Sculpt
 Style : Overview
 Sample type: Development sample
 Design Date : 2022-12-20
 Update Date : 2023-2-7
 Expecting Date: ASAP



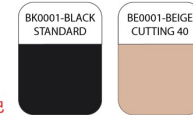
TP represents 75B and/or M sizes
 => Please follow gradation charts for bigger sizes (fabric change/elastic widths/...)

RECYCLED CIRCULAR KNIT CK022



SS24 FX LINGERIE COLLECTION

Theme: SHAPEWEAR
 Program : Absolute Sculpt
 Style : Material list
 Sample type: Development sample
 Design Date : 2022-12-20
 Update Date : 2023-4-12



全件同色

TP represents 75B and/or M sizes
 => Please follow gradation charts for bigger sizes (fabric change/elastic widths/...)

CIRCULAR KNIT (RECYCLED YARN)
 手感請跟此版 #SS-21103



CK022

*materials need to pass CHINA starands

Dull shoulder Strap : 長豐 Cheung Fung #L4070
 Width : 10mm / 16mm

Foldover elastic: Tak Fast #TL53091
 Width : 12mm / 16mm / 20mm / 24mm

Thin elastic for leg opening: New Horizon- CB5153/5/FG
 Width : 8mm / 12mm

32mm Micro H&E (nylon coated): BFB-TS-SLSL324266
 Size: 32mm 4R*2C

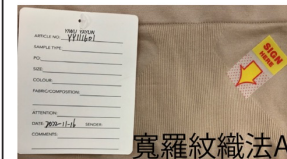
45mm Micro H&E (nylon coated): BFB-TS-SLSL454366
 Size: 45mm 4R * 3C

Nylon Coated Ring : 翔亞 3HM-T010C/3HM-T016C
 (Inner) Width : 10mm/ 16mm

Nylon Coated Slider : 翔亞H810/H8106
 (Inner) Width : 10 mm

Nylon Coated 9-hook : 翔亞H910E/H916
 (Inner) Width : 10 mm /16mm

Snap Button for Bodysuit gusset opening: FS-305
 size:18*18*36MM
 RMB ¥0.680/set (net)MCQ: 10000 set (or RMB400/color)



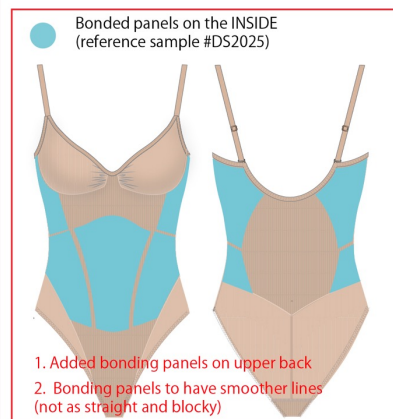
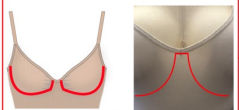
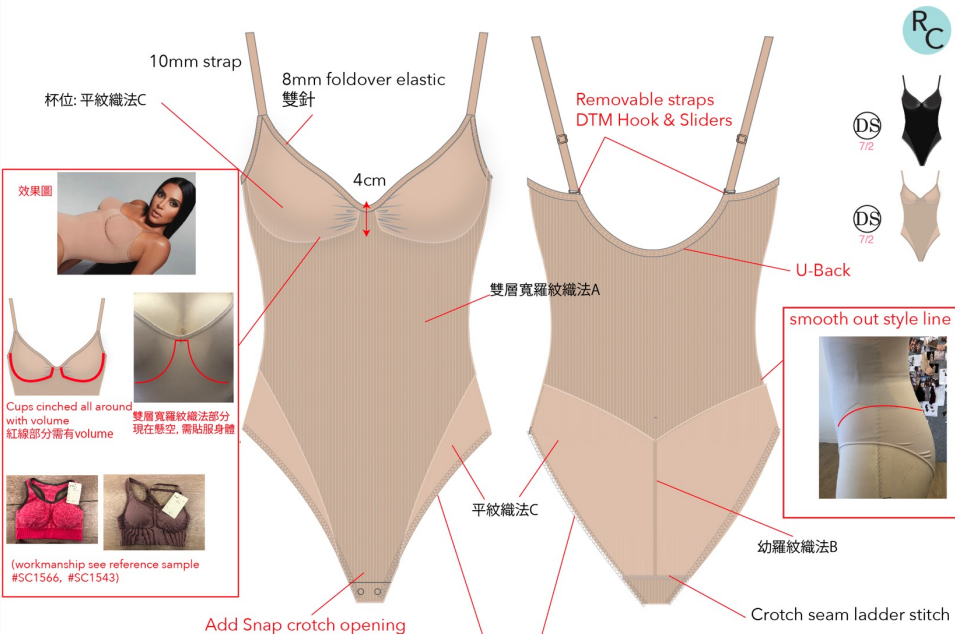
SS24 FX LINGERIE COLLECTION

Theme: SHAPEWEAR
 Program : Absolute Sculpt
 Style : NON-PADDED BODYSUIT
 Article no.: FXHB0003CK022
 Sample type: Development sample
 Design Date : 2022-12-20
 Update Date : 2023-2-8

全件同色



TP represents 75B and/or M sizes
 => Please follow gradation charts for bigger sizes (fabric change/elastic widths/...)



REMARKS: Please feel free to suggest any ideas for improvement on workmanship

SS24 FX LINGERIE COLLECTION

Theme: SHAPEWEAR
 Program : Absolute Sculpt
 Style : NON-PADDED BODYSUIT
 Article no.: FXHB0003CK022
 Sample type: Development sample
 Design Date : 2022-12-20
 Update Date : 2023-2-8

全件同色



TP represents 75B and/or M sizes
 => Please follow gradation charts for bigger sizes (fabric change/elastic widths/...)

Style line ref :



Bonding panels to have smoother lines (not as straight and blocky)

REMARKS: Please feel free to suggest any ideas for improvement on workmanship

